

# Data Science

## Lecture 1-2: Social Impact of Data Science



UNIVERSITY  
OF AMSTERDAM

Lecturer: Yen-Chia Hsu

Date: Sep 2025



Data science can create a social impact to influence society positively!

This lecture uses my previous projects to show the social impact of data science.

# Air Quality Monitoring System

Integrating smoke videos, sensor readings, and smell reports

<http://shenangochannel.org>

 Association for Computing Machinery

BrowseAboutSign inRegister

JournalsMagazinesProceedingsBooksSIGsConferencesPeople

Search ACM Digital Library

Advanced Search

ConferenceProceedingsUpcoming EventsAuthorsAffiliationsAward Winners

Home > Conferences > CHI > Proceedings > CHI '17 > Community-Empowered Air Quality Monitoring System

RESEARCH-ARTICLE • 

## Community-Empowered Air Quality Monitoring System

**Authors:**  Yen-Chia Hsu,  Paul Dille,  Jennifer Cross,  Beatrice Dias,  Randy Sargent,  Illah Nourbakhsh

[Authors Info & Affiliations](#)

**Publication:** CHI '17: Proceedings of the 2017 CHI Conference on Human Factors in Computing Systems • May 2017

• Pages 1607–1619 • <https://doi.org/10.1145/3025453.3025853>

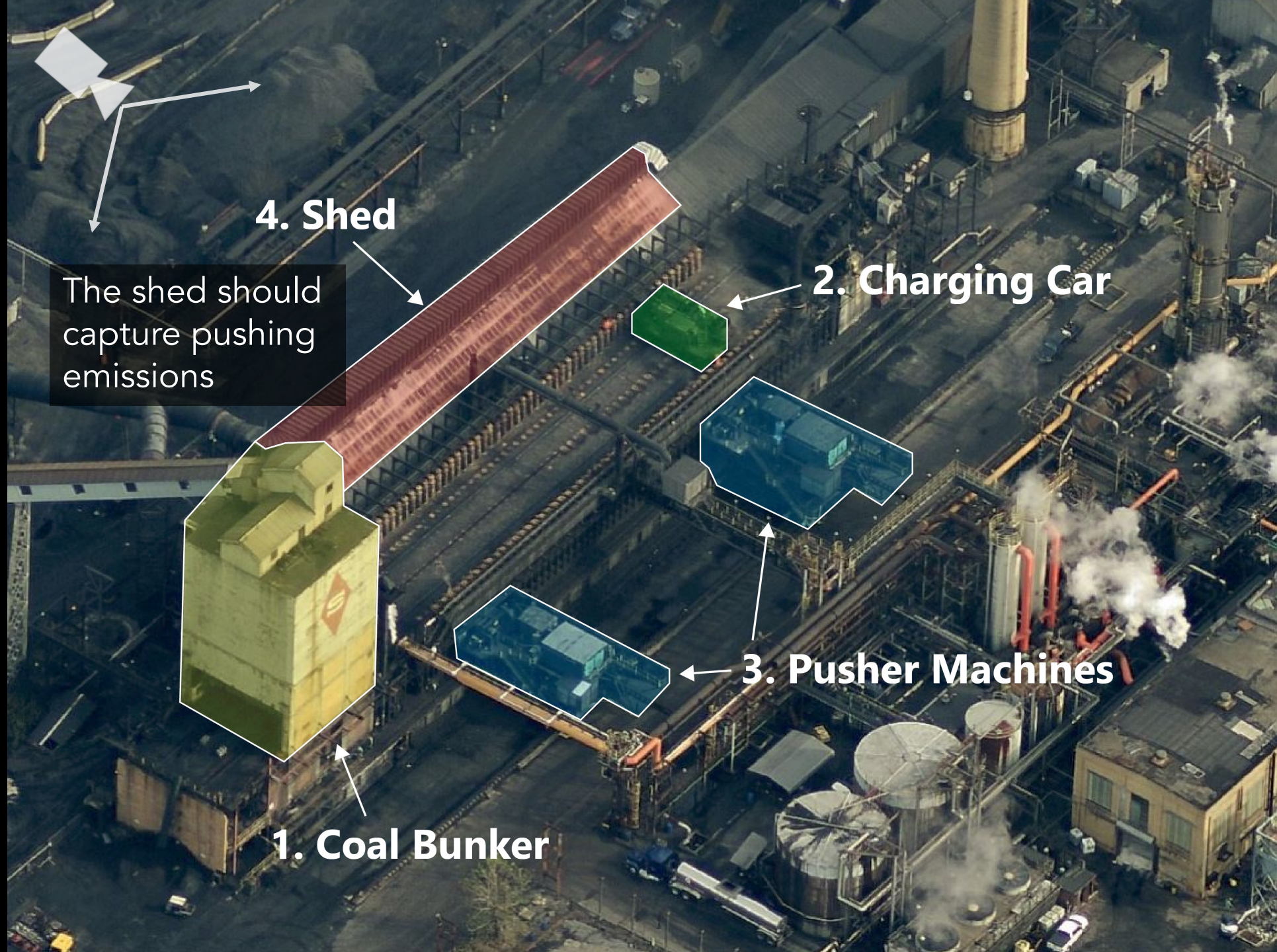
 10  540

   [Get Access](#)











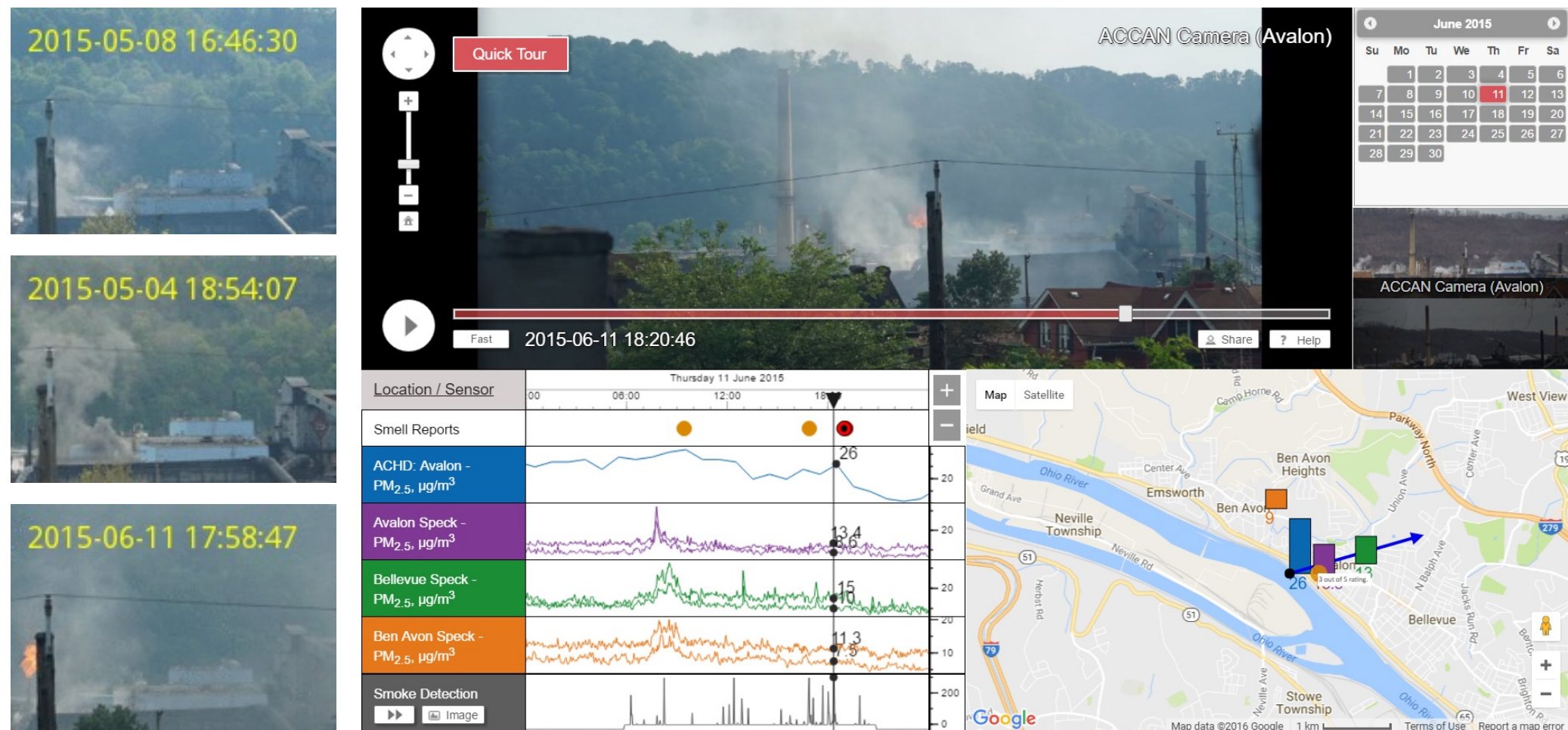


2015-06-15 17:44:06

- Co-design to collect evidences of air pollution
- Present them to the government or media
- Raise the public awareness of air quality issues



Residents can integrate the evidence of air pollution and their personal experiences into a story to influence regulators' attitudes and increase the community's confidence.



“But what I see in the video,” the acting director of U.S. EPA Region III Air Protection Division said, referring to videos from the system that were projected on a screen at the front of the meeting room, “is totally unacceptable.”



















# Smell Pittsburgh

Crowdsourcing and visualizing pollution odors

<https://smellpgh.org>



Association for  
Computing Machinery

BrowseAboutSign inRegister

JournalsMagazinesProceedingsBooksSIGsConferencesPeople

Search ACM Digital Library

Advanced Search

Journal HomeForthcomingLatest IssueArchiveAuthorsEditorsReviewersAboutContact Us

Home > ACM Journals > ACM Transactions on Interactive Intelligent Systems > Vol. 10, No. 4 > Smell Pittsburgh: Engaging Community Citizen Science for Air Quality

RESEARCH-ARTICLE

## Smell Pittsburgh: Engaging Community Citizen Science for Air Quality

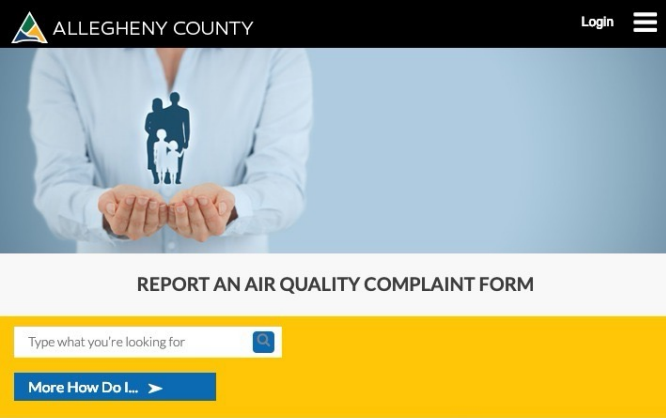


**Authors:** Yen-Chia Hsu, Jennifer Cross, Paul Dille, Michael Tasota, Beatrice Dias, Randy Sargent, Ting-Hao (Kenneth) Huang, Illah Nourbakhsh [Authors Info & Affiliations](#)

**Publication:** ACM Transactions on Interactive Intelligent Systems • November 2020 • Article No.: 32  
• <https://doi.org/10.1145/3369397>

0 25

Get Access

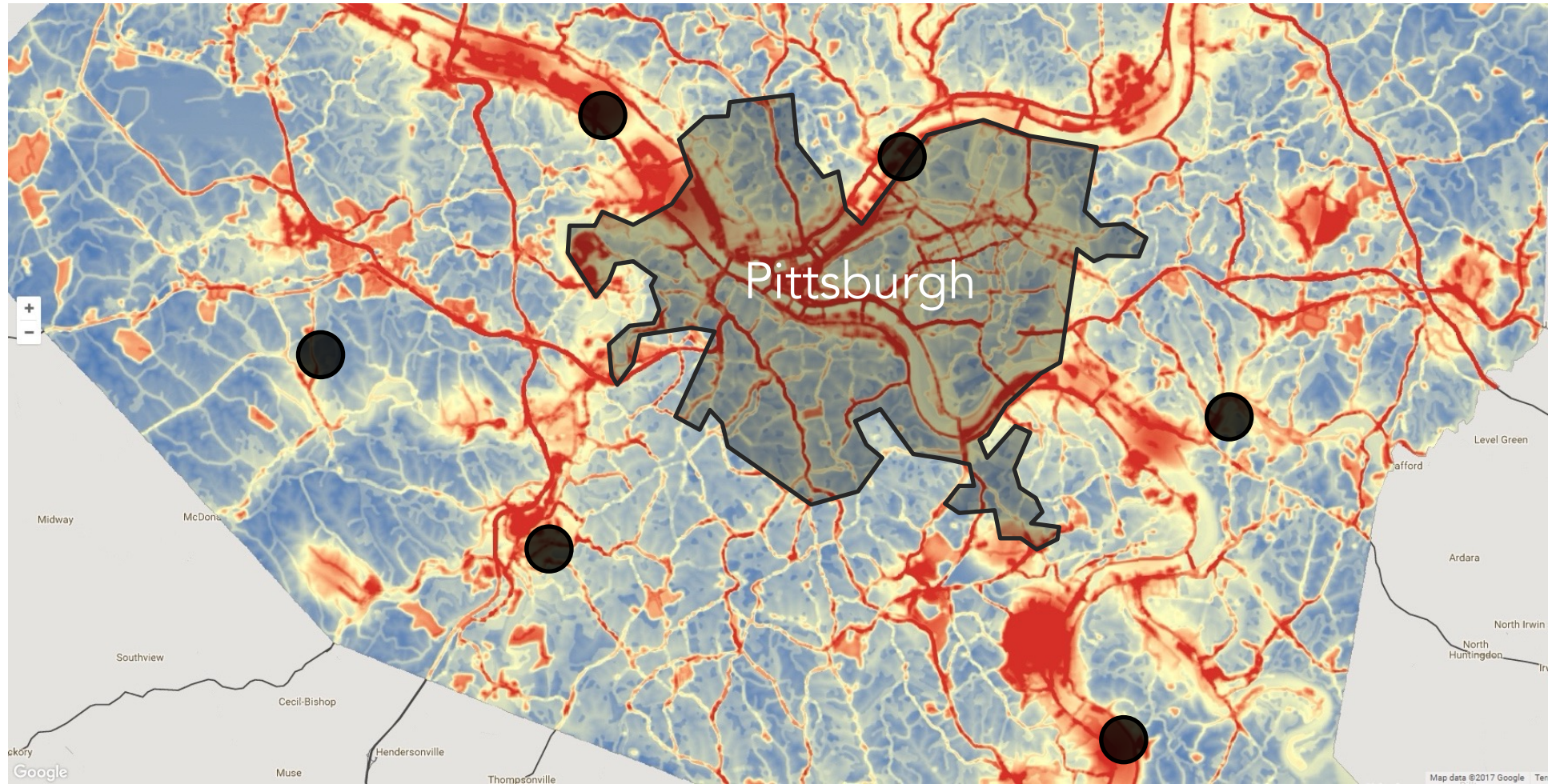


The prior approach that asks citizens to report odor complaints post hoc via forms or phone calls suffers from:

- poor data quality
- non-transparency

The odor reporting form -- <https://www.alleghenycounty.us/Health-Department/Programs/Air-Quality/Report-an-Air-Quality-Complaint-Form.aspx>

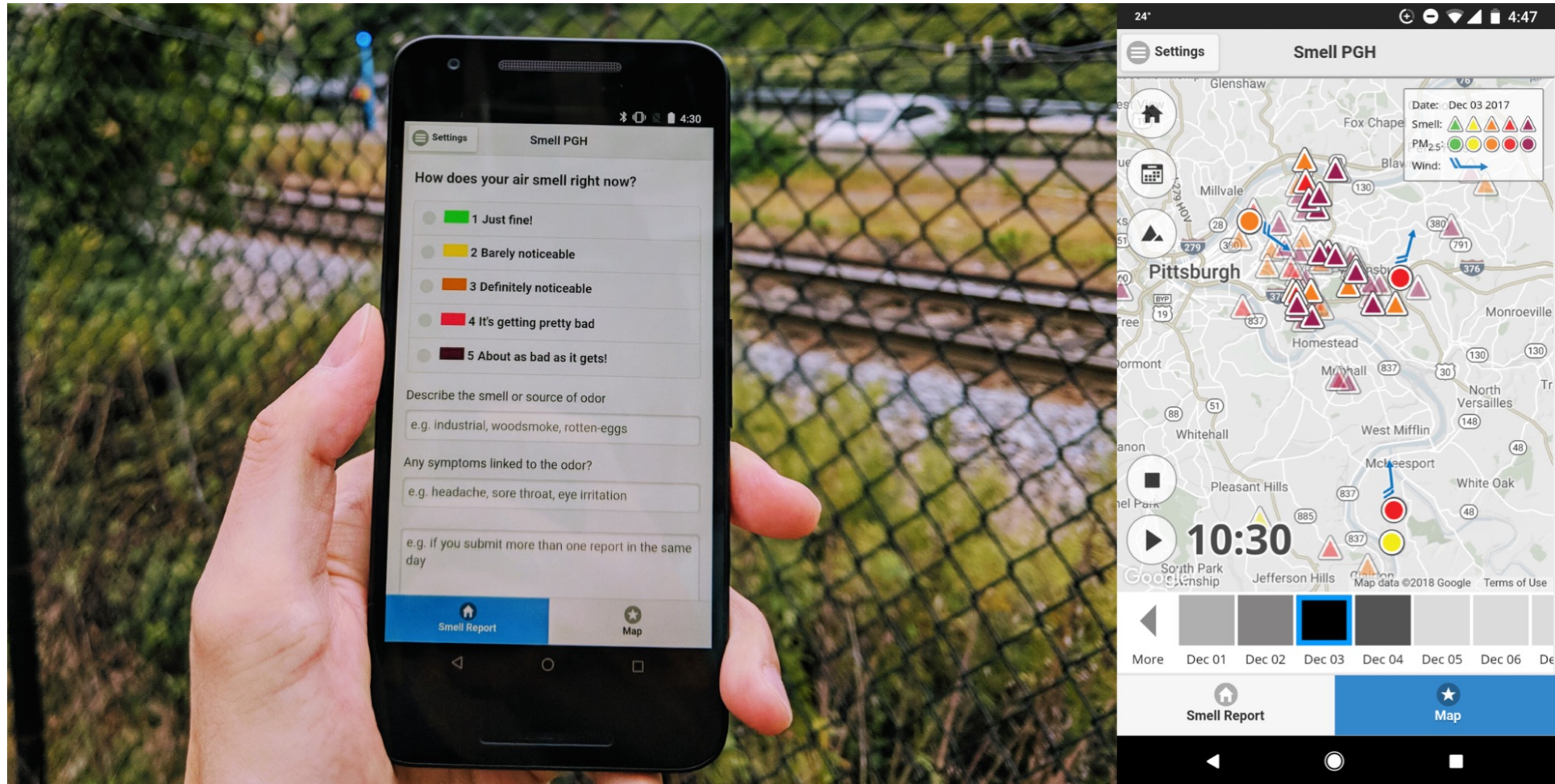
How can we effectively collect the smell experiences on a **city-wide scale** with more than 300,000 residents and many pollution sources over many years?



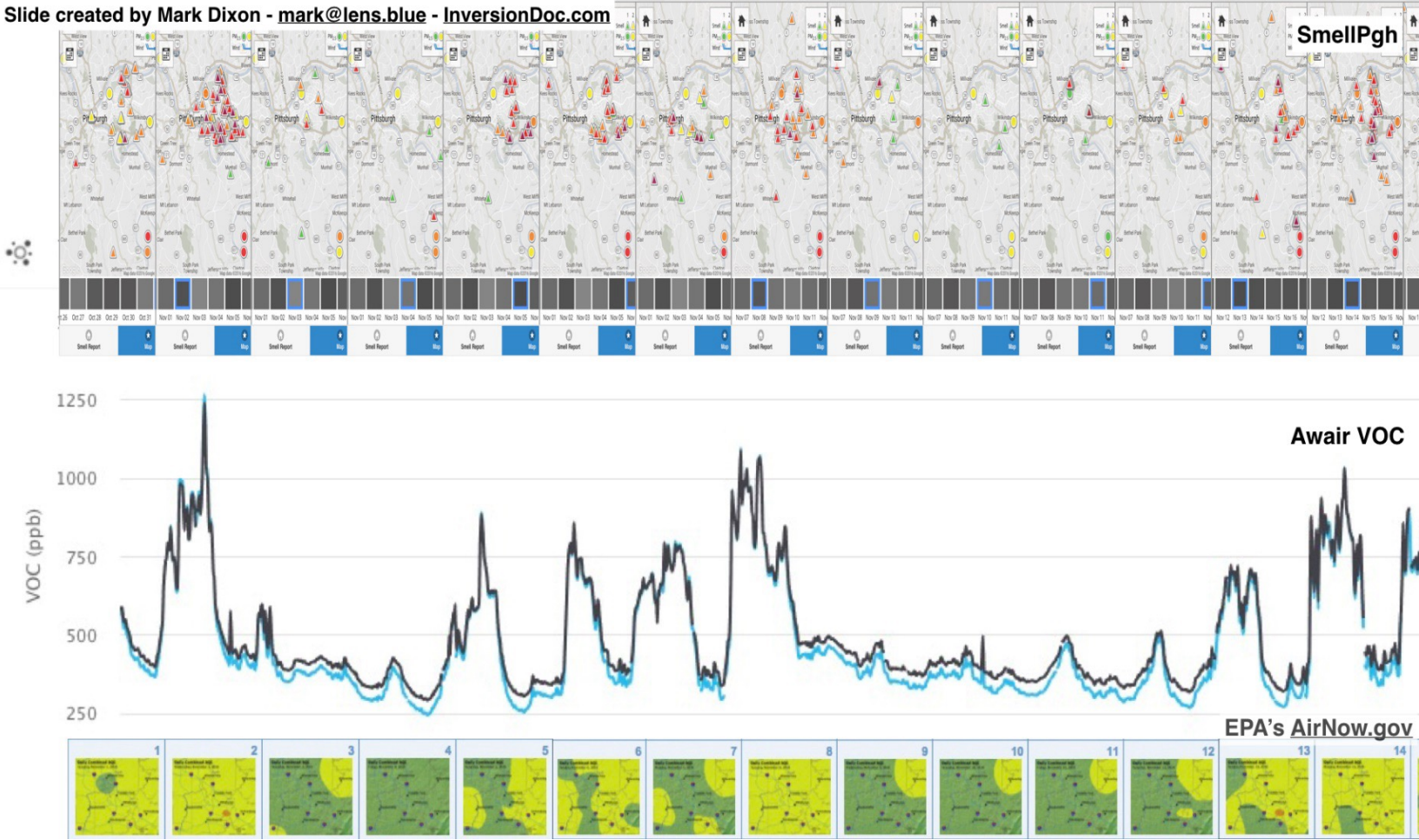
Pittsburgh pollution map -- <https://breatheproject.org/pollution-map/>



Smell Pittsburgh enables communities to [collect data on a large scale](#). Also, visualizing multi-modal data in real-time can help communities understand local concerns.



Community members plot smell reports with self-operated VOC (volatile organic compounds) sensors to **find correlations** and inspect how pollution impacts them.





Decision-makers in the local health department mentioned that “Every aspect of the activity and operation of these coke plants will have a more stringent standard applied.”



**Air advocates read 'scroll of smells' at health board meeting**

Photo credit Don Hopey

**Table 1: Distribution of Smell Reports**

Smell Rating	Description	2022	2021	2020	2019	2018	2017
1	Just fine!	333 (3.6%)	707 (5.7%)	1,565 (8.2%)	1,711 (9.5%)	1,199 (13.0%)	1,658 (20.4%)
2	Barely noticeable	287 (3.1%)	447 (3.6%)	921 (4.8%)	798 (4.4%)	497 (5.4%)	665 (8.2%)
3	Definitely noticeable	1,922 (20.8%)	2,902 (23.3%)	4,436 (23.3%)	4,305 (23.9%)	2,649 (28.8%)	2,246 (27.7%)
4	It's getting pretty bad	3,185 (34.5%)	4,258 (34.2%)	6,014 (31.6%)	5,805 (32.3%)	2,932 (31.9%)	2,171 (26.8%)
5	About as bad as it gets!	3,506 (38.0%)	4,126 (33.2%)	6,082 (32.0%)	5,358 (29.8%)	1,918 (20.9%)	1,372 (16.9%)
Sum		9,233	12,440	19,019	17,977	9,195	8,112

**Table 2: User Engagement with The Smell PGH App**

Number of Unique Users	2022	2021	2020	2019	2018	2017
Submitted Reports	1,242 (37.0%)	1,804 (41.5%)	2,688 (46.8%)	3,274 (50.9%)	1,769 (66.9%)	1,308 (58.4%)
Used the Map	3,054 (90.9%)	3,919 (90.2%)	5,227 (91.0%)	5,708 (88.8%)	2,248 (85.0%)	1,949 (87.0%)
Participated (N)	3,358	4,347	5,743	6,429	2,645	2,239

Is smell data useful in predicting local air pollution events and identifying patterns?



Smell Pittsburgh **predicts upcoming smell events** (based on the collected reports) and send **push notifications** to inform users and encourage engagement.



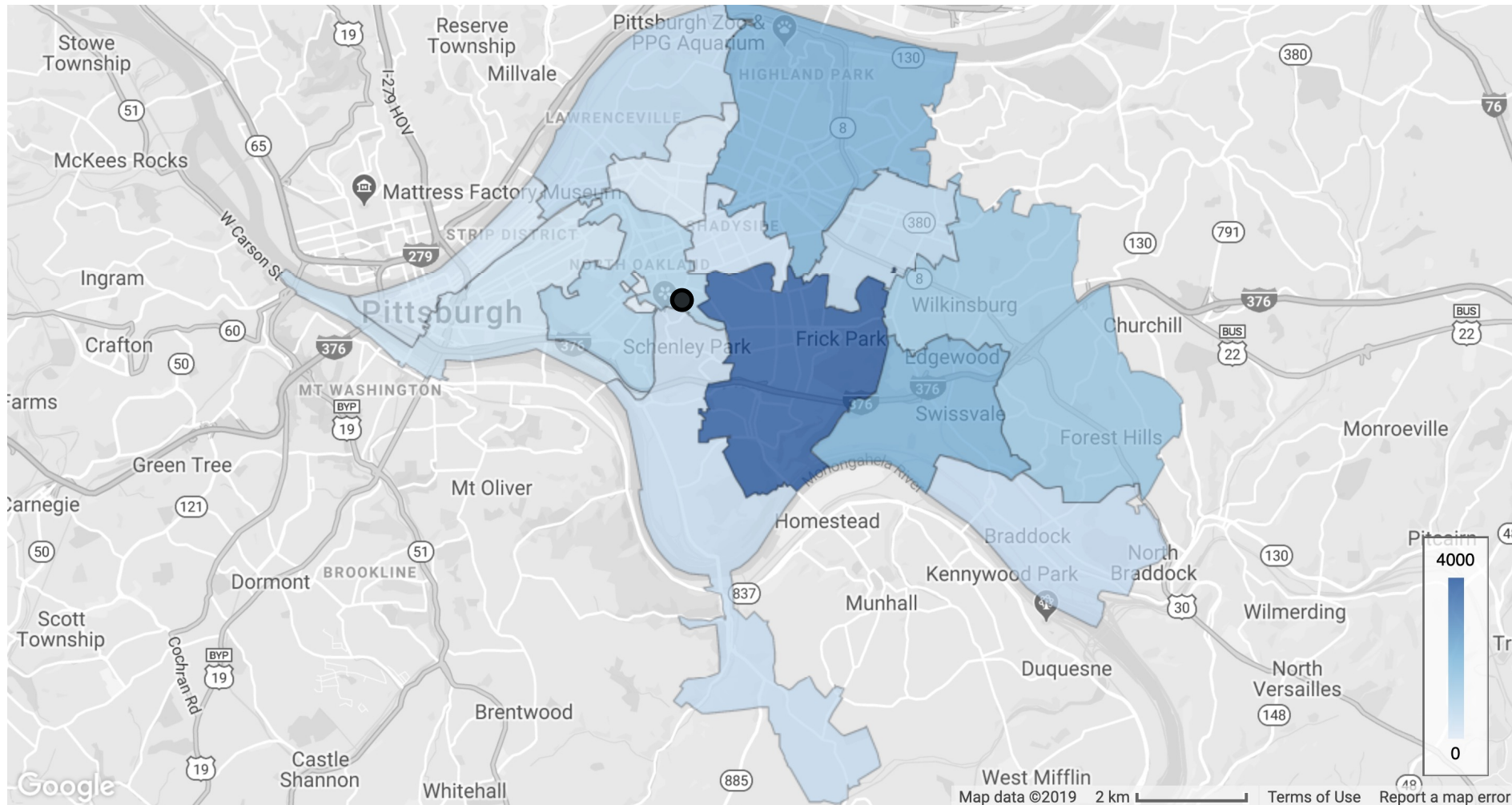
## SMELL PGH

### **Smell Event Alert**

Local weather and pollution data indicates there may be a Pittsburgh smell event in the next few hours.

Keep a nose out and report smells you notice!

A geographic region in Pittsburgh is manually selected when predicting the smell events. The black dot is Carnegie Mellon University.



Number of smell reports aggregated by zip codes -- <https://smellpgh.org/analysis#figure9>

We use a Random Forest (a machine learning model) to **predict smell events** from **air quality data** (obtained from government-operated sensor stations).

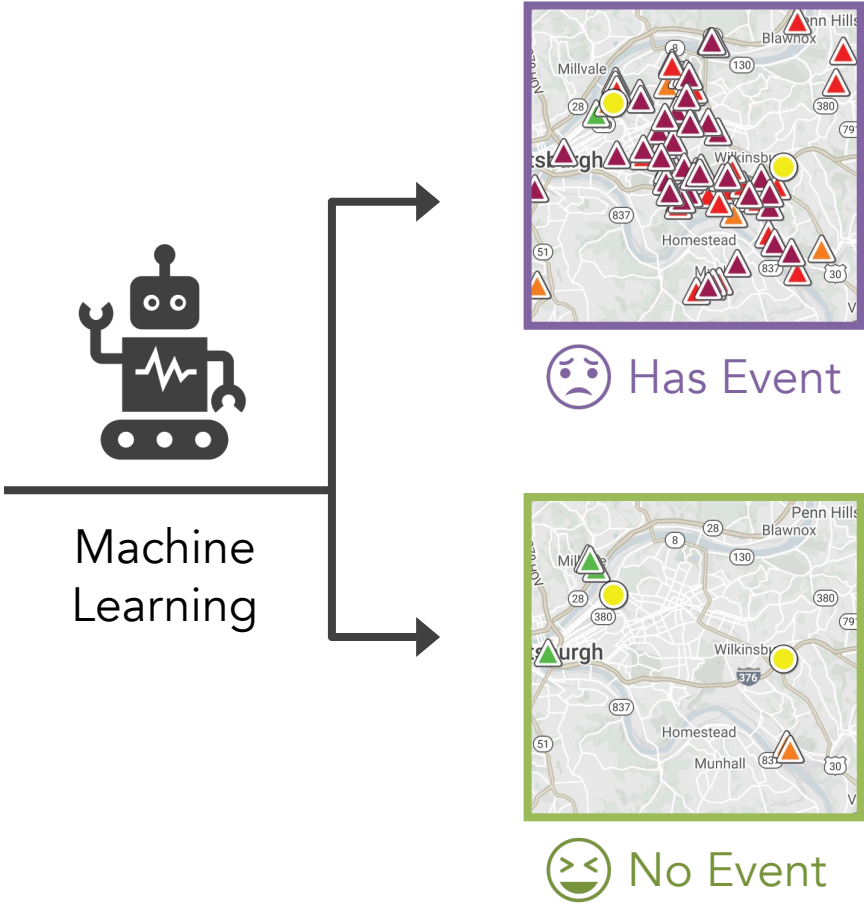
O <sub>3</sub> : 26 ppb	CO: 127 ppb
H <sub>2</sub> S: 0 ppb	PM <sub>2.5</sub> : 9 µg/m <sup>3</sup>
Wind: 17 deg	...

Observation 1

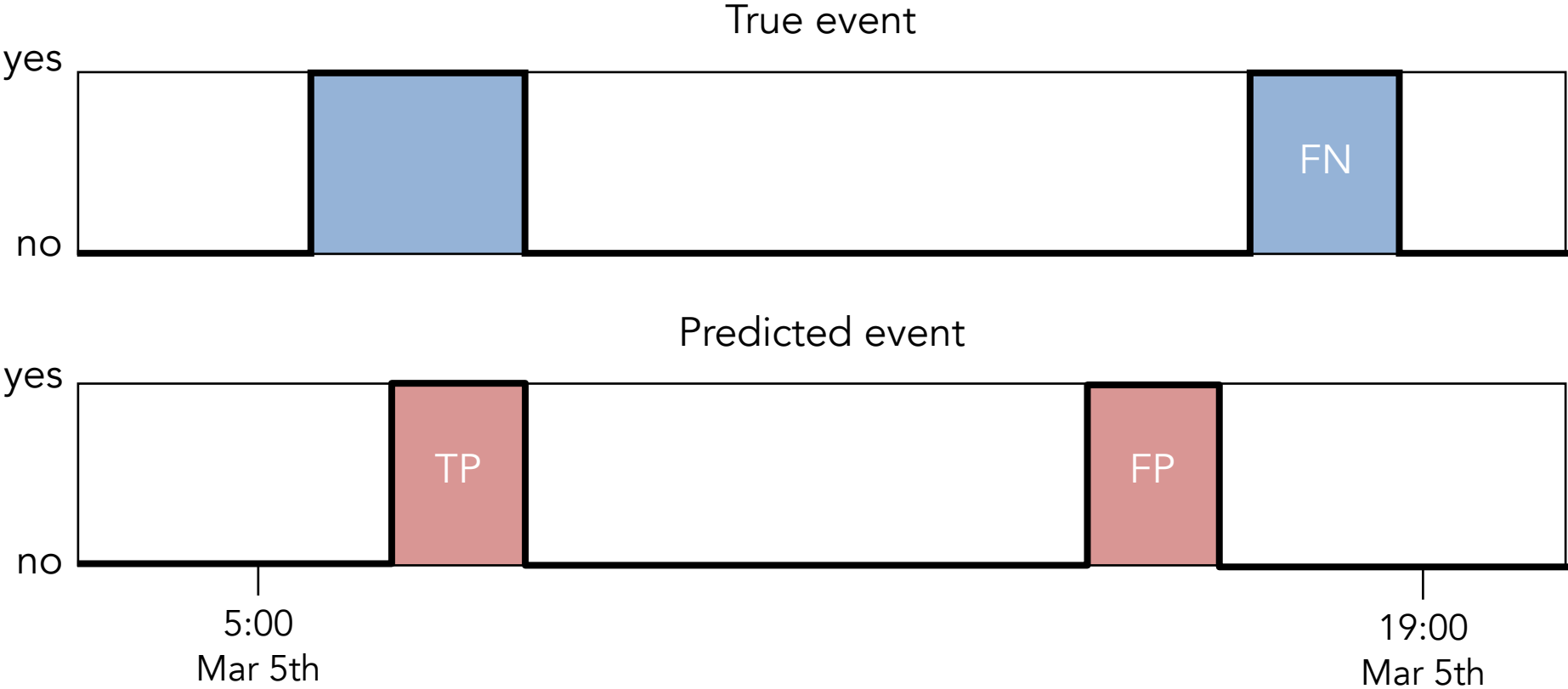
O <sub>3</sub> : 1 ppb	CO: 1038 ppb
H <sub>2</sub> S: 9 ppb	PM <sub>2.5</sub> : 23 µg/m <sup>3</sup>
Wind: 213 deg	...

Observation 2

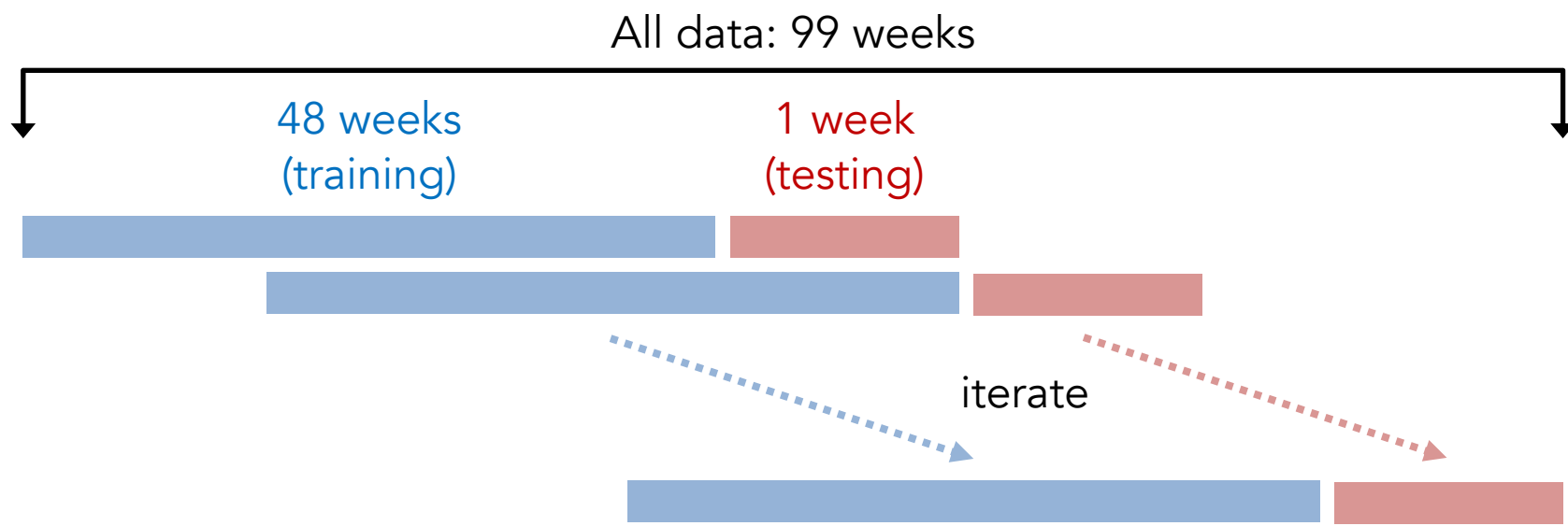
⋮



To evaluate models, we first compute **true positives (TP)**, **false positives (FP)**, and **false negatives (FN)** for smell events.

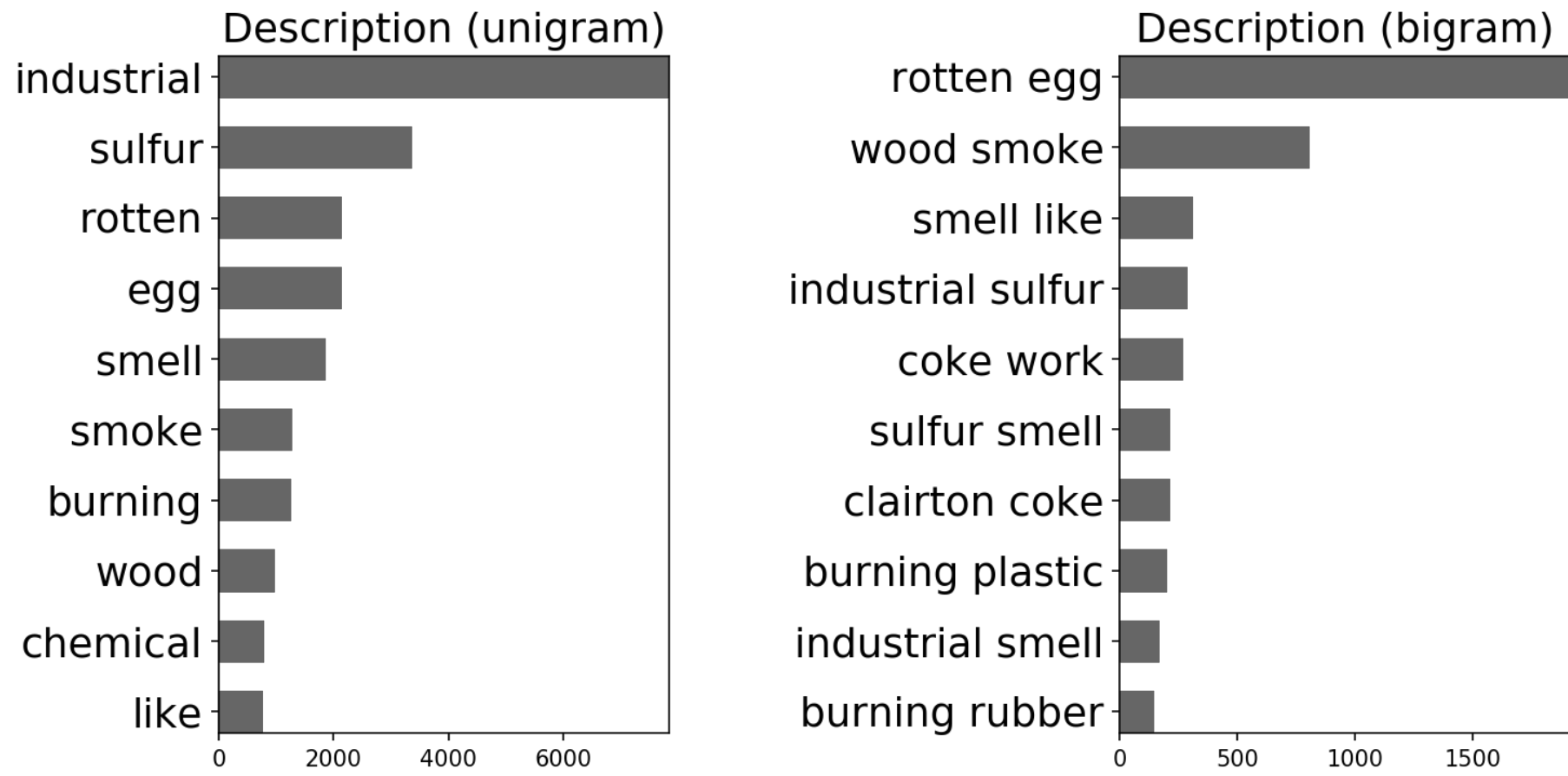


We apply time series cross-validation of several pairs of training and testing sets to evaluate the model performance.

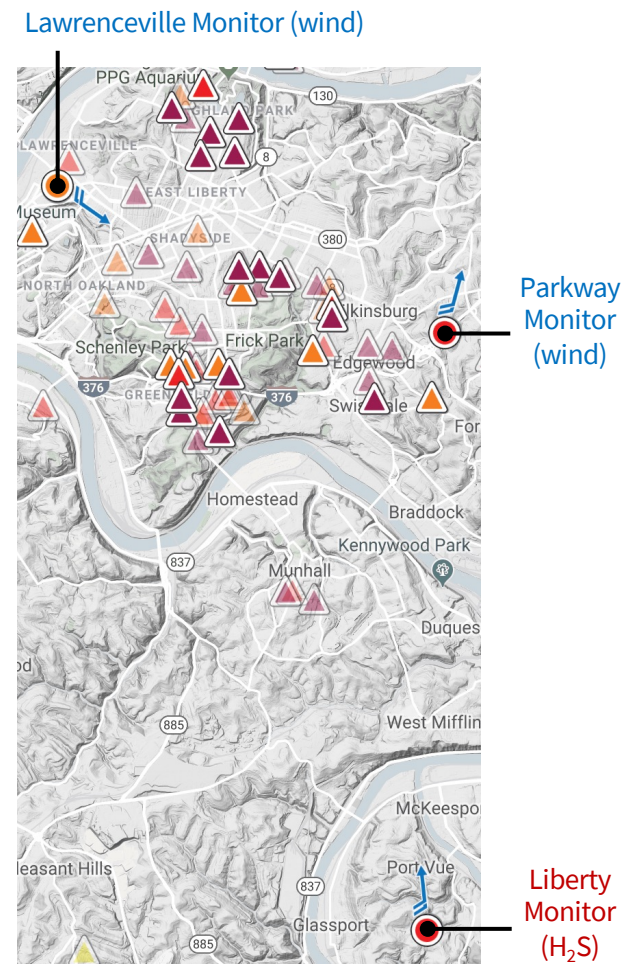
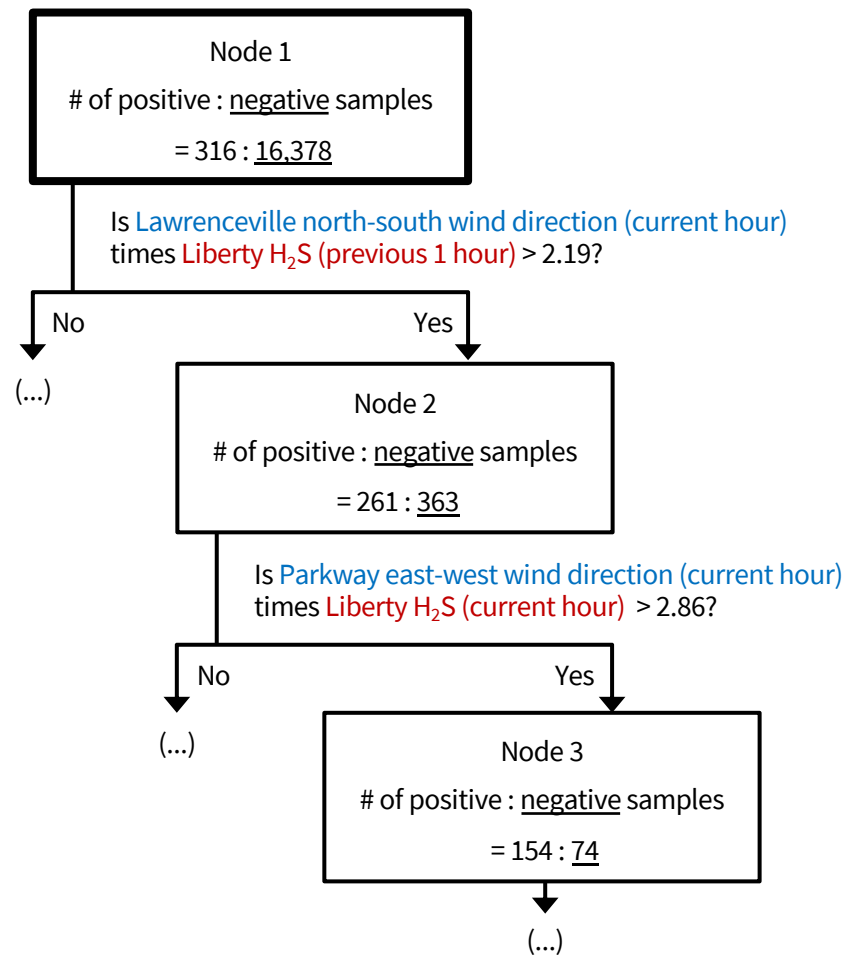


	Precision	Recall	F-score
Our best model	0.87±0.01	0.59±0.01	0.70±0.01
Always yes	0.2	1	0.33

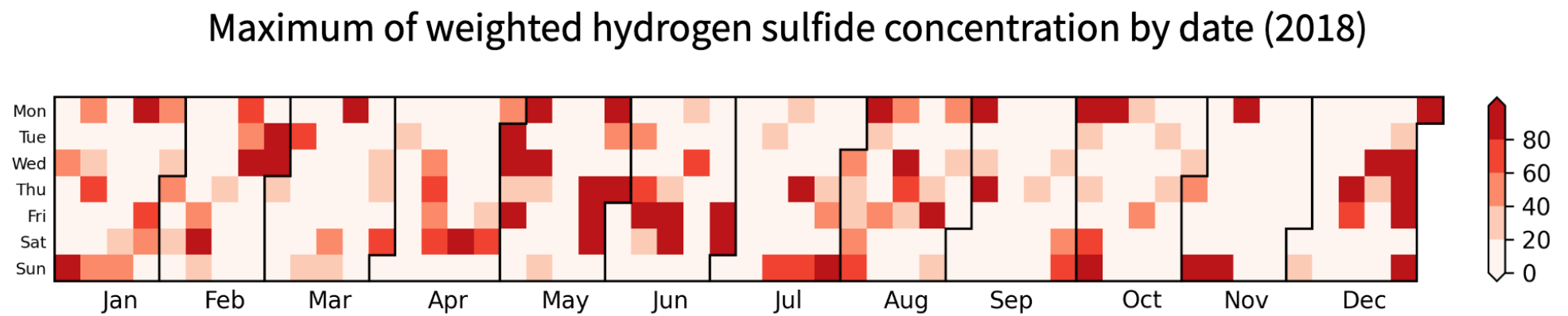
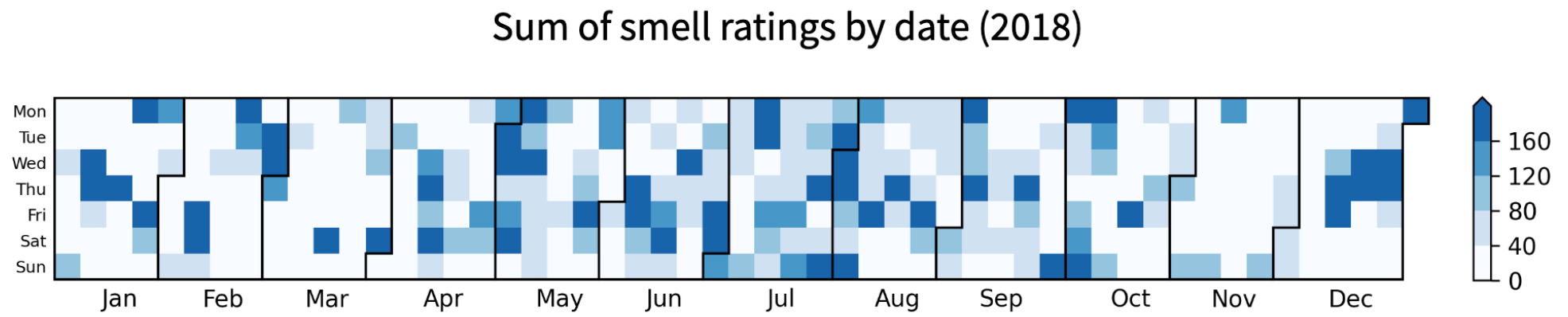
High-frequency words and phrases in smell reports mostly describe industrial pollution odors, like hydrogen sulfide.



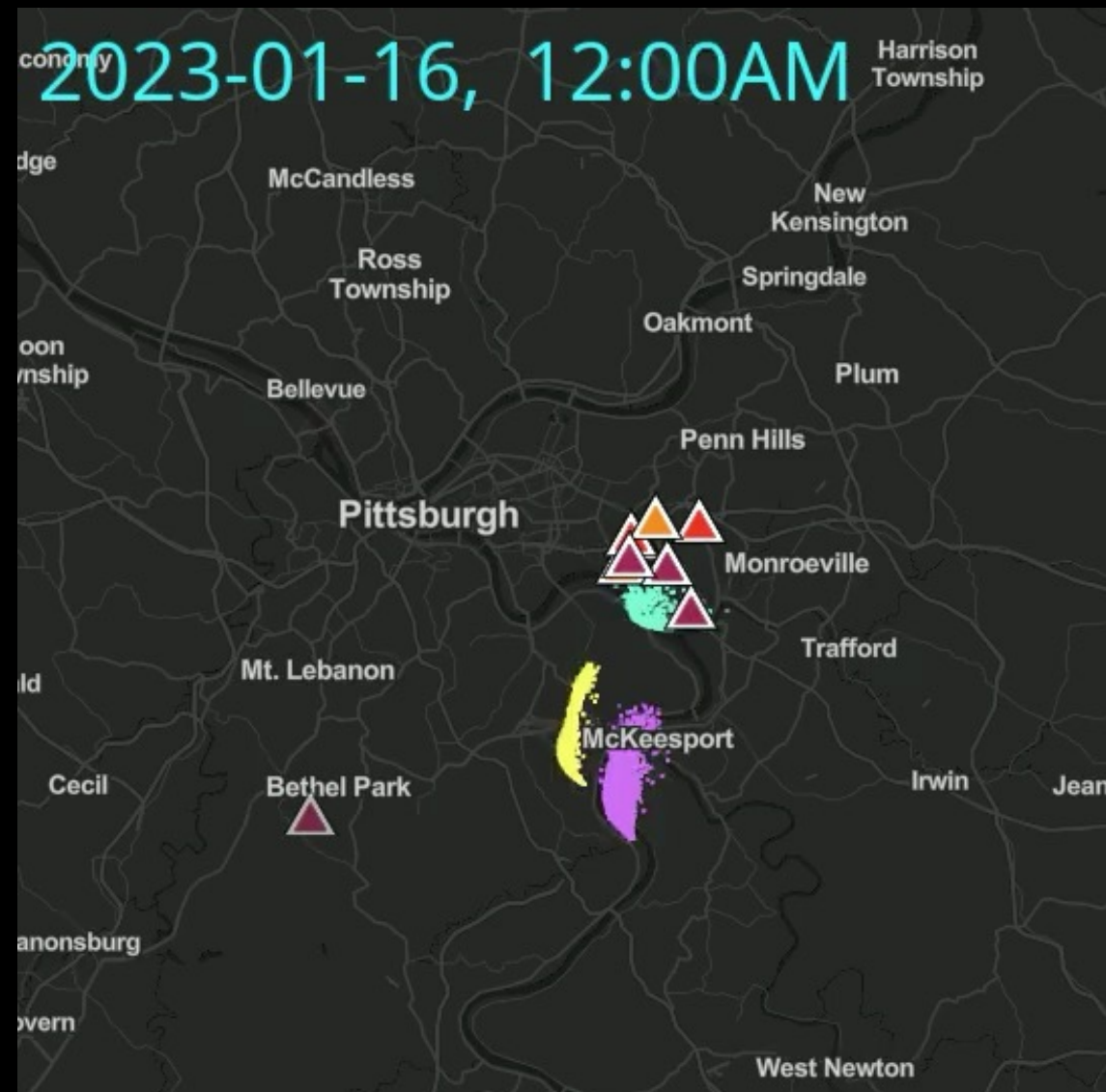
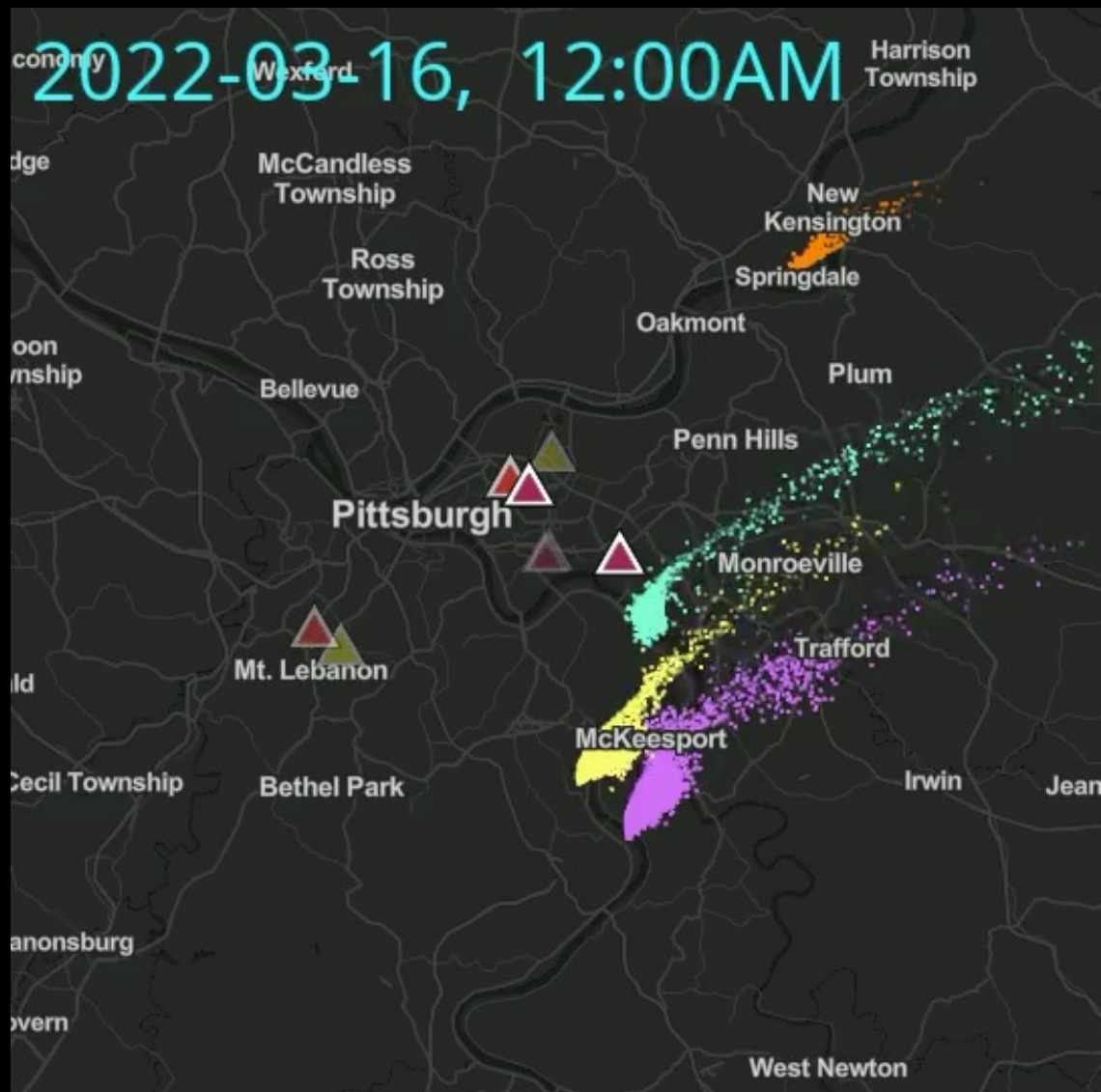
We also use Decision Tree (a machine learning model) to explain about 30% of the smell events, which is a joint effect of wind information and hydrogen sulfide.



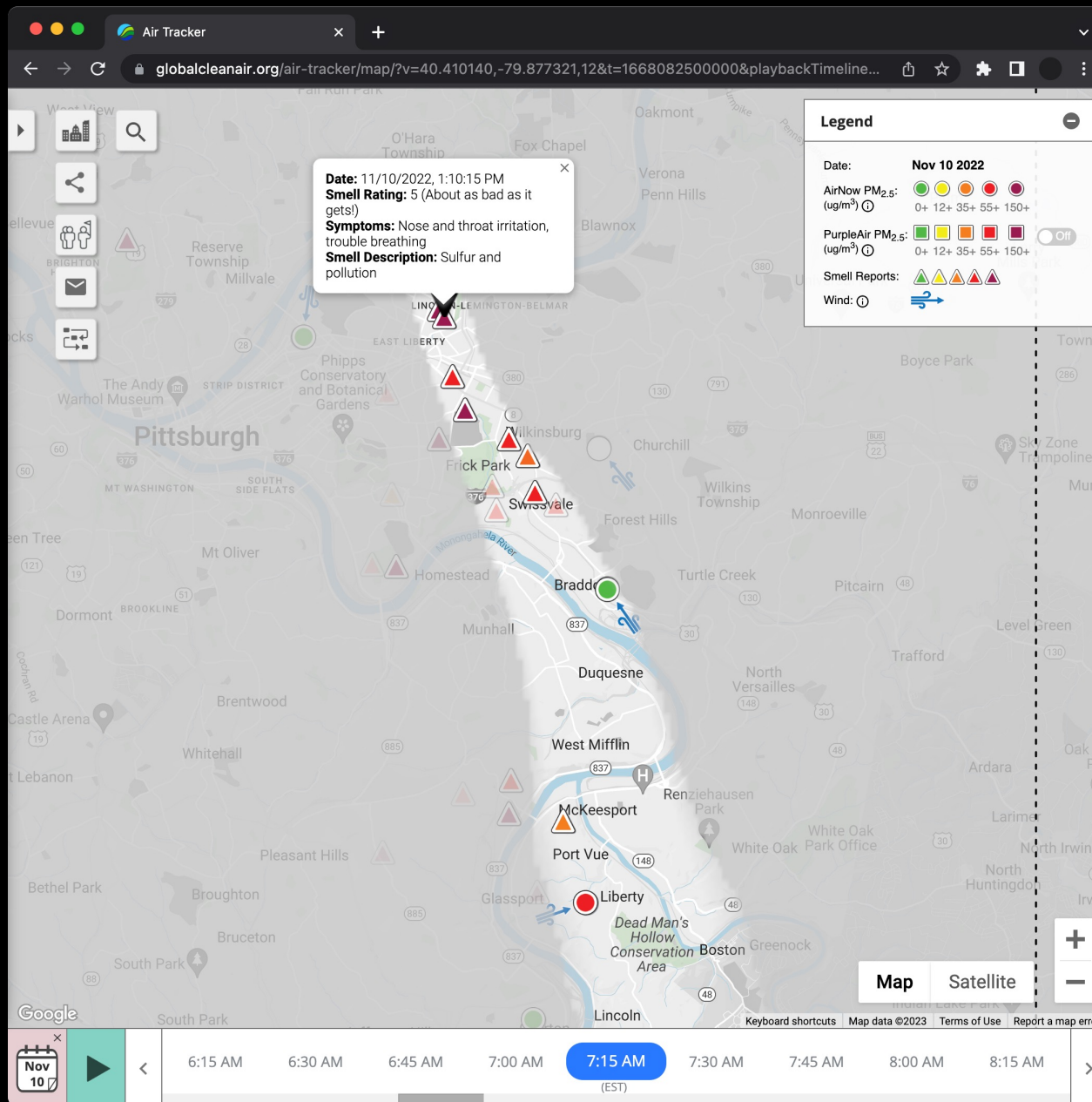
We further compute and visualize the relationship between the sum of smell ratings and the maximum concentration of weighted hydrogen sulfide for each day.







Visualize how pollution emissions can align with smell reports -- <https://plumepgh.org/?date=2022-03-16>



Track potential air pollution sources -- <https://globalcleanair.org/air-tracker/map/>

# Project RISE

Recognizing Industrial Smoke Emissions

<https://smellpgh.org>

## Proceedings of the AAAI Conference on Artificial Intelligence

[Current](#) [Archives](#) [About](#) ▼

🔍 Search

[Home](#) / [Archives](#) / [Vol. 35 No. 17: IAAI-21, EAAI-21, AAAI-21 Special Programs and Special Track](#) /  
AAAI Special Track on AI for Social Impact

### Project RISE: Recognizing Industrial Smoke Emissions

**Yen-Chia Hsu**

Carnegie Mellon University

**Ting-Hao (Kenneth) Huang**

Pennsylvania State University

**Ting-Yao Hu**

Carnegie Mellon University

**Paul Dille**

Carnegie Mellon University

**Sean Prendi**

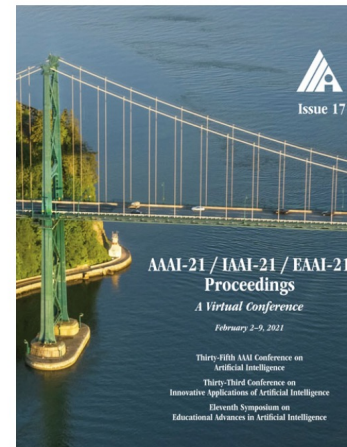
Carnegie Mellon University

**Ryan Hoffman**

Carnegie Mellon University

**Anastasia Tsuhlares**

Carnegie Mellon University



#### Information

[For Readers](#)

[For Authors](#)

[For Librarians](#)

[Open Journal Systems](#)

#### Subscription

Login to access subscriber-only resources.

PKP|PS



This project aim to **recognize industrial smoke emissions** automatically on the videos obtained from a camera monitoring network.



<http://smoke.createlab.org>



Has smoke



Has smoke



No smoke



Has smoke



We [invite communities to annotate](#) if the videos have industrial smoke emissions using a web-based tool.



Project RISE

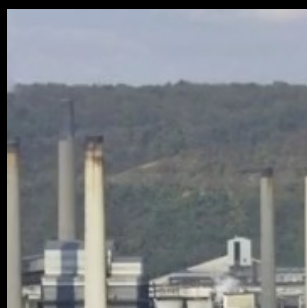
So far, 22929 (23.91%) out of 95879 videos are fully labeled, and 3403 (3.55%) videos are partially labeled ([learn more](#)). You have [reviewed 431 pages](#), of which ([researcher](#)) have passed the quality check ([learn more](#)).

[Sign Out](#) [Interactive Tutorial](#) [My Contribution](#)

Each video is 3 seconds. Click or tap to select videos that have smoke. Click or tap again to deselect. **Skip a video if you are not sure whether it has smoke.**

1 2

Four video thumbnails showing industrial smoke emissions. The first thumbnail is highlighted with a red border and the number 1 below it. The second thumbnail is labeled with the number 2 below it. The third and fourth thumbnails are also visible but not labeled with numbers.



19  
Views





The data enables Computer Vision applications using deep neural networks, and our baseline model (I3D+Timeception) can find emissions with reasonable performance.



	Precision*	Recall*	F-score*
Our best I3D model	0.86	0.79	0.82
Always yes	0.41	1	0.58

\*Average of the metric for all data splits (training, validation, and test)

## Project RISE



This page shows videos that the Artificial Intelligence model thinks **have hazardous smoke emissions**. The following image shows the camera view ID and location.



The timeline below shows smoke events ([learn more](#)), where the x-axis means hour of day. To show videos, select a date  and compare the events with **Smell Pittsburgh**. Also, select a camera ID  and view ID  to filter videos.



07/07/2020, 06:48  
Duration: 4.7 min  
View ID: 2-3  
[Link to Viewer](#)

07/07/2020, 07:08  
Duration: 7.8 min  
View ID: 2-3  
[Link to Viewer](#)

07/07/2020, 07:19  
Duration: 3.3 min  
View ID: 2-3  
[Link to Viewer](#)

07/07/2020, 07:25  
Duration: 6.2 min  
View ID: 2-3  
[Link to Viewer](#)



07/07/2020, 07:27

07/07/2020, 07:32

07/07/2020, 07:47

07/07/2020, 08:02



# Dutch Context







fruitpunch.ai

FruitPunch AI

Challenges ▾ For Individuals ▾ For Organizations ▾ Publications ▾ Community Platform

STARTING SOON

# AI against Toxic Clouds

Use Computer Vision to detect toxic clouds emitted by large factories and report the authorities on the sightings

Go to challenge

## Help environmental authorities monitor illegal air pollution by large factories.

Illegal pollution damages the environment and public health. Old production plants often do not reach the standards of today's laws and regulations, but, due to corporate lobbying and meager funding, authorities are rarely able to uphold these standards. To combat toxic emissions, local governments can issue fines for harmful incidents. The only problem is that some companies cross the line daily, while environmental agencies do not have the manpower to monitor a facility 24/7.

**In this Challenge**, we will collaborate with Greenpeace to aid in the monitoring of the Tata Steel plant in IJmuiden, the Netherlands.

Tata Steel\* is one of those sites that regularly release illegal toxic substances into the air. For this specific steel plant, we narrow down the problem to the most polluting factories, which are the two coke ovens\*. These are extremely old and leak like a sieve. When processing raw coke, the factories sometimes release black clouds containing carcinogenic PAHs (polycyclic aromatic hydrocarbons), which is illegal under Dutch law. Unsurprisingly, the area around the Tata Steel plant sadly has a significantly higher incidence of lung cancer than the rest of the Netherlands. Tata Steel is obligated to report incidents in which PAHs escape to the Dutch Environmental Services but rarely does so.

### Application deadline

July 17, 2023

Join challenge

### Timeline

Application Deadline: **17 July 2023**  
Challenge Kick-off: **19 July 2023**  
Midterm Presentations: **9 Augustus 2023**  
Final Presentations: **27 September 2023**

BreatheCam

breathecam.multix.io/#v=1314.37079,567.62613,0.81,pts&t=790.77&ps=50&bt=20240313230002&et=20240314225959&d=2024-03-14&s=kooks\_fabriek\_2

Kooks Fabriek 2

March 2024

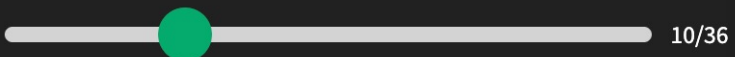
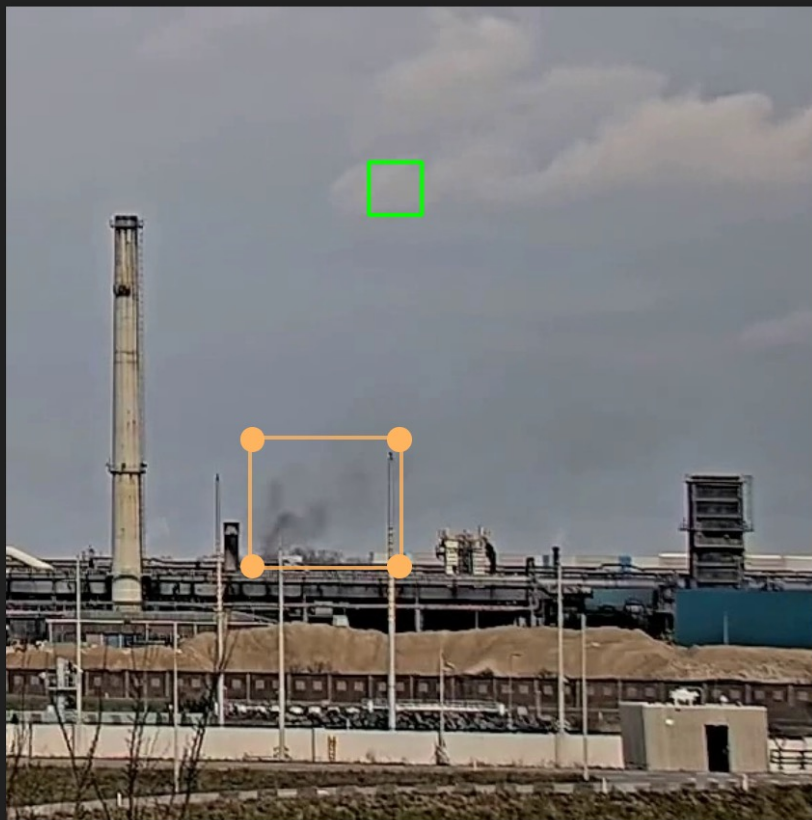
Su	Mo	Tu	We	Th	Fr	Sa
					1	2
3	4	5	6	7	8	9
10	11	12	13	14	15	16
17	18	19	20	21	22	23
24	25	26	27	28	29	30
31						

Kooks Fabriek 2

Kooks Fabriek 1

Medium 2024-03-14 13:48:21

Share Help



10/36

Let op: geef alleen feedback op de afbeelding met het groene kader, niet op de hele video.

Beeld 5/8

Verwijder kader

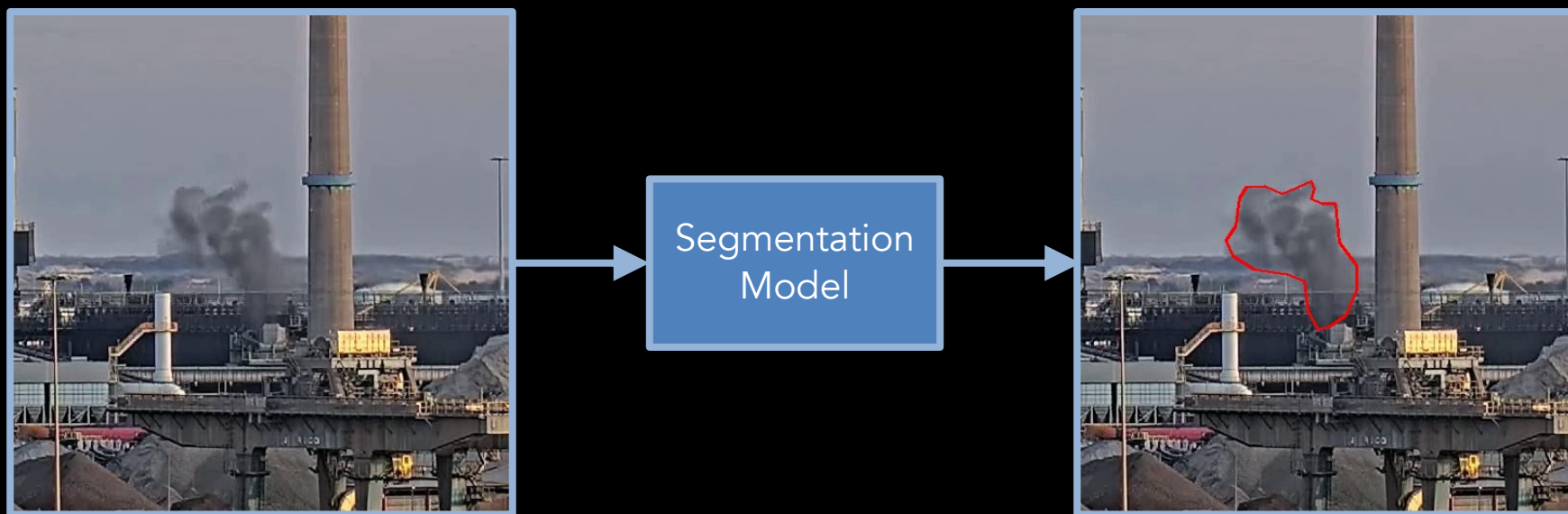
< Vorige

> Bevestigen en Volgende





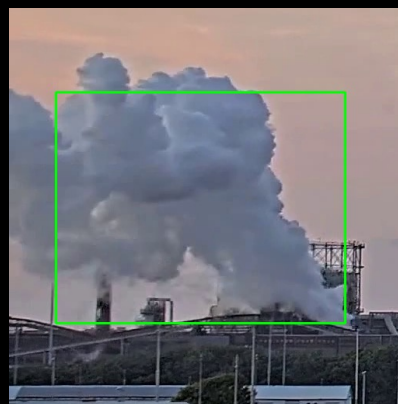




To what extent can community feedback help improve the model?



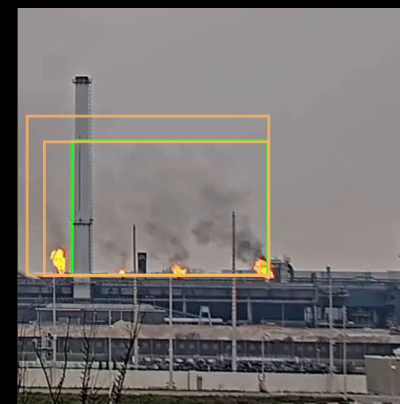
Wrong: No Smoke



Wrong: Steam



Too Small



Roughly OK



# Questions?

- Yen-Chia Hsu – <http://yenchiah.me>
- Air Quality Monitoring – <http://shenangochannel.org>
- Smell Pittsburgh – <https://smellpgh.org>
- Project RISE – <https://smoke.createlab.org>
- IJmondCAM – <https://ijmondcam.multix.io/>

